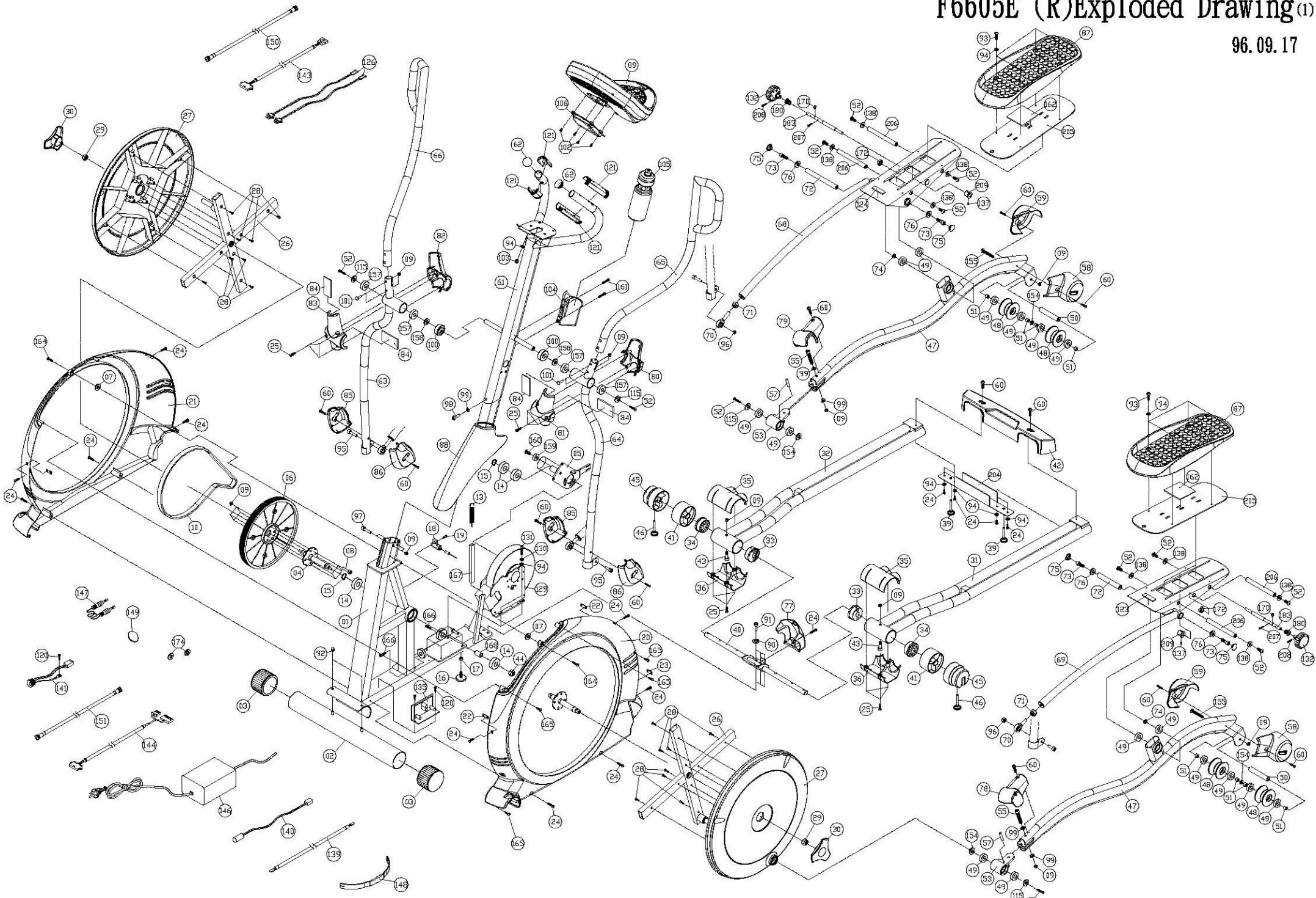


# F6605E (R) Exploded Drawing (1)

96.09.17



Item	Description	Qty
1	Frame	1
2	Front Base Tube	1
3	Movalbe Wheel 075(FM002)	2
4	Grank Assembly	1
5	Idle Assembly	1
6	Belt Wheel(Big) 0310(J8)	1
7	Plastic Washer 08X019X5.5t	2
8	CKS Hex Screw M8XP1.25X20 (BK)	4
9	Nylon Nut M8XP1.25 (BK)	16
10	Belt 49" J8	1
11		
12		
13	Idle Incline Spring NS-122 (Galvanization)	1
14	Bearing 6204ZZ	4
15	C-Shaped Ring 020 (BK)	2
16	Adjustment Food Pad GA51AM827	1
17	Nut M8XP1.25 (BK)	1
18	Inductor Fixing Base P-1152	1
19	Washer Drilling Philips Screw M4XP0.7X16(BK)	1
20	Frame Side Cover(Left) P-1506L	1
21	Frame Side Cover(Right) P-1506R	1
22	Lock Plastic Fixing Iron Plate(Middle) NO-3141	2
23	Lock Plastic Fixing Iron Plate(Short) NO-3141A	1
24	Truss Philips Screw M5XP0.8X10 (BK)	15
25	Truss Philips Wood Screw 04X16 (BK)	12
26	Turnplate Cross	2
27	Plastic Turnplate P-1504	2
28	Truss Philips Wood Screw 05X15 (BK)	16
29	Washer Nut M14XP1.5X10t	2
30	Turnplate Protecting Cover P-1505	2
31	Stabilizer Assebmly(Left)	1
32	Stabilizer Assebmly(Right)	1
33	Pedal Iron Tube Plastic(Outer) P-1514	2
34	Pedal Iron Tube Plastic(Inner) P-1514A	2
35	Pedal Iron Tube Plastic(Upper) P-1510A	2
36	Pedal Iron Tube Plastic(Lower) P-1510B	2
37		
38		
39	Adjustment Food Pad 3/8" X29mm	2
40	Folding Core Assembly	1
41	Axle Tube Protecting Tube P-1722	2
42	Rear Stabilizer Protecting Cover P-1972	1
43	CKS Hex Screw M8XP1.25X70 (BK)	2
44	Nylon Nut M20XP1.0	1
45	Folding Plug(Outer) P-1513	2
46	Adjustment Food Pad P-1768	2
47	Pedal Iron Tube Platic	2
48	Wheel P-1728A(074X44)	4
49	Bearing 6003ZZ	16
50	Wheel Fixing Bushing NT-1557	2
51	Outer and Inner Pumping Tube 018X023.7X7	8
52	Truss Hex Screw M8XP1.25X15 Blue Nylok(BK)	12
53	Pedal Fixing Plate Assembly(Front)	2
54		
55	CKS Hex Screw M8XP1.25X85 (BK) 30mm<Blue Nylok>	2
56		
57	Pedal Iron Tube Plastic Core NT-1560	2
58	Wheel Protecting Cover(Left) P-1516L	2
59	Wheel Protecting Cover(Right) P-1516R	2
60	Truss Philips Screw M4XP0.7X15 (BK)	12

## R) Part List

Item	Description	Qty
61	Upper Control Tube	1
62	Tube Cap P-1712(Ø1-1/4" )	2
63	Handrail Assembly(Left)	1
64	Handrail Assembly(Right)	1
65	Upper D-Shaped Handrail(Left) PU	1
66	Upper D-Shaped Handrail(Right) PU	1
67		
68	Motion Arm(Right)	1
69	Motion Arm(Left)	1
70	Fisheye(Universal Bearing) POS12-R(Ø12)	2
71	Nylon Nut M12	2
72	Motion Axis NT-1461	2
73	CKS Hex Screw M8XP1.25X15 Blue Nylok	4
74	Plastic Washer P-1651 (BK)	2
75	Plug P-1393	4
76	Flat Washer Ø8.5XØ19X2.0t (BK)	4
77	Middle Frame Cover P-1507	1
78	Pedal Iron Tube Protecting Cover(Left) P-1517L	1
79	Pedal Iron Tube Protecting Cover(Right) P-1517R	1
80	Front Handrail Protecting Cover(Left) P-1527	1
81	Rear Handrail Protecting Cover(Left) P-1527A	1
82	Front Handrail Protecting Cover(Right) P-1527B	1
83	Rear Handrail Protecting Cover(Right) P-1527C	1
84	Foam Sticker 70X40X5.0t	4
85	Link Bar Protecting Cover(Left) P-1518L	2
86	Link Bar Protecting Cover(Right) P-1518R	2
87	Pedal P-1519	2
88	Control Tube Plastic P-1508	1
89	Computer Console	1
90	Spring Washer M10 (BK)	3
91	CKS Hex Screw M10X20 (BK)	3
92	Nut M8XP1.25 (BK)	2
93	Truss Philips Screw(Blue Nylok Stainless Steel) M5XP0.8X10 (BK)	8
94	Flat Washer Ø6XØ13X1.0t (BK)	20
95	CKS Hex Screw M12XP1.75X40 (BK)	2
96	Nylon Nut M12XP1.75 (BK)	2
97	CKS Hex Screw M8XP1.25X60 (BK)	2
98	CKS Hex Screw M8XP1.25X15 (BK)	1
99	Arc Washer NO-2014 (BK)	5
100	Handrail Fixing Plastic P-1520	2
101	Screw M8XP1.25X45 (BK)	4
102	Truss Philips Screw(Blue Nylok Stainless Steel) M4XP0.7X8 (BK)	4
103	Nut M6XP1.0 (BK)	4
104	Bottle Holder NT-771	1
105	Bottle Holder L-027	1
106	TV Decoration Cover P-1646	1
107		
108		
109		
110		
111		
112		
113		
114		
115	Washer Ø8XØ25X2.0t (BK)	4
116		
117		
118		
119		
120	Truss Drilling Philips Screw Ø4XØ16 (BK)	3

Item	Description	Qty
121	Hand Pulse Set	2
122		
123	Inching Pedal Decal(Left) <54321> RBC-6605-003L	1
124	Inching Pedal Decal(Right) <12345> RBC-6605-003R	1
125		
126	Hand Pulse Cord XL-270 720mm	2
127		
128		
129	Grinding Wheel Galvanize Ø242	1
130	Spring Washer M6XP1.0	4
131	CKS Hex Screw M6XP1.0X20	4
132	Button P-1144A & NT-2068	2
133		
134		
135	Rear Control Board	1
136		
137	Hollow Pin Ø3x5	2
138	Flat Washer Ø8.5XØ20X1.5t (BK)	8
139	Grinding Wheel Control Wire XL-410	1
140	Speed Sensor Wire XL-411	1
141	Power Supply Wire XL-412	1
142		
143	Control Wire(Middle)	1
144	Control Wier(Upper)	1
145		
146	Power Supply IN: OUT:28.8V 3.5A	1
147	MP3 Sound Cable XEK-059	1
148	Wireless Pulse Emitter	1
149	TV Romote Controller ZAE-001A T7/T10/T16	1
150	TV Link Wire(Upper) L-413	1
151	TV Link Wire(Lower) L-414	1
152		
153		
154	Wave Washer Ø17XØ24x0.3t	4
155	Fixing Screw SK-443 M8X135(牙長15)<Blue Nylok>	2
156		
157	Beaing 6904VV	4
158	Wave Washer Ø20.7XØ29.1x0.3t	2
159	Idle Pad NT-1489	3
160	Count Sink Hex Screw M5xP0.8x15 <Blue Nylok>	3
161	Truss Philips M4xP0.7x10 (BK)	2
162	Foam Sticker 90X90X3.0t <Sigle Sided T	2
163		
164	Truss Philips Screw M5XP0.8X15 (BK)	2
165	Truss Philips Wood Screw Ø5X12	4
166	CKS Hex Screw M8XP1.25X25	2
167	HDR Foam Sticker Ø17XØ24x80	1
168	Belt Wheel Sleeve Inner Cylinder NT-1633	1
169		
170	C-Shaped Ring Ø11	2
171		
172	Hex Nut 5/8"-18UNF	2
173		
174	Washer Ø10XØ15x1.0t	2
175		

