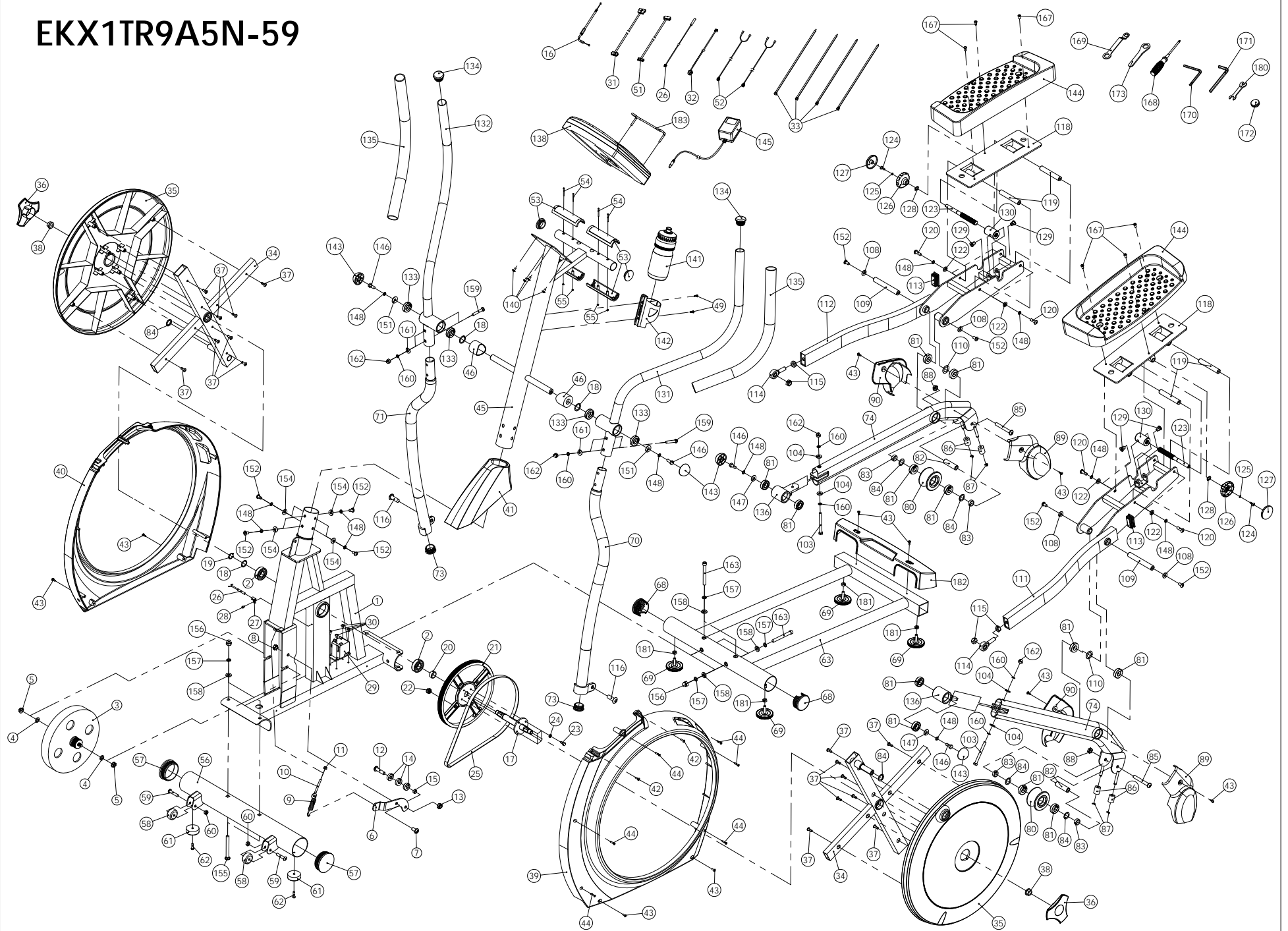


EKX1TR9A5N-59



EKX1TR9A5N-59 PART LIST

No.	Description	Qty	No.	Description	Qty
1	Frame	1	84	Wave Washer Ø17.5xØ26x0.3t	6
2	Bearing6204ZZ	2	85	Truss Hex Screw M10x80	2
3	Gringing Wheel	1	86	Crashworthy Rubber	4
4	Washer Ø18xØ10x2.0t	2	87	E Shaped Ring	4
5	Allen Flange nut 3/8"x26	2	88	Nylon Nut M10	2
6	Idler Fixing Iron Plate	1	89	Left PU Wheel Decoration Cover	2
7	Truss Hex Screw M10x20	1	90	Right PU Wheel Decoration Cover	2
8	Nylon Nut M10(14)	1	103	Allen Bolt M8x85	2
9	Idler Extension Spring	1	104	Washer Ø20xØ9x2t Nickelage	4
10	Adjustment Screw	1	108	Washer Ø20xØ9x2t BK	4
11	Flange Nut M6	1	109	Foot Pedal Post	2
12	Truss Hex Screw M10x42	1	110	Plastic Washer	2
13	Nylon Nut M10(17)	1	111	Left Adjustment Base	1
14	Bearing 6000ZZ	3	112	Right Adjustment Base	1
15	Sleeve NBO551410	1	113	Tube End 25X50X3.0T	2
16	Adjustment Tightwire	1	114	Bearing on the Connecting Rod End	2
17	Crank Post + Iron Plate	1	115	Nylon Nut M12	4
18	Wave Washer Ø29xØ21x0.35t	3	116	Truss Hex Screw M12X35	2
19	C Shaped Circlip Ø20	1	118	Pedal Fixing Assembly	2
20	Sleeve NBE2510	1	119	Slide Bar	4
21	Aluminum Drive Belt Wheel	1	120	Truss Hex Screw M8X25	8
22	Magnet with Plastic Base	1	122	Washer Ø18xØ9x2t	8
23	Allen Bolt M6x15	4	123	Screw Stem	2
24	Spring Washer M6x2.0t	4	124	Truss Philips Screw M5X15 BK	2
25	Belt	1	125	Spring Washer M5X1.3T	2
26	Sensor Wire	1	126	Knob	2
27	Sensor Fixing Plastic	1	127	Upper Knob Cover	2
28	Round Head Philips Self Tapping Screw ST4.0x16	1	128	C Shaped Ring Ø12	2
29	Adjustment Motor	1	129	Subland Screw	4
30	Truss Philips Screw M5X12	4	130	Screw Stem Adjustment Bushing	2
31	Middle Control Wire	1	131	Left Handrail	1
32	Power Cord	1	132	Right Handrail	1
33	Loincloth	4	133	Bearing 6904ZZ	4
34	Turnplate Shelf	2	134	Tube End	2
35	Turnplate	2	135	HDR Foam Grip	2
36	Turnplate Cover	2	136	Connecting Components	2
37	Truss Philips Self Tapping Screw ST5.0x20	16	138	Computer	1
38	Allen Flange Nut M14	2	140	Truss Philips Screw M5x10 Nickelage	4
39	Left Chain Guard	1	141	Bottle	1

EKX1TR9A5N-59 PART LIST

No.	Description	Qty	No.	Description	Qty
40	Right Chain Guard	1	142	Bottle Holder	1
41	Upper Body Cover	1	143	Screw Cover	4
42	Truss Philips Self Tapping Screw ST4.0x20	2	144	Plastic Pedal	2
43	Truss Philips Screw M4X12	10	145	Transformer	1
44	Countr Sink Philips Self Tapping Screw ST4X25	6	146	Allen Bolt M8x20	4
45	Upright	1	147	Washer Ø22xØ9x2t	2
46	Hook-Prevention Cover	2	148	Spring Washer M8x2.0t BK	19
49	Truss Philips Screw M5X15 galvanized	2	151	Washer Ø25xØ9x2.0t	2
51	Upper Control Wire段	1	152	Truss Hex Screw M8x15	11
52	Hand Pulse Wire	2	154	Arc Washer BK	7
53	Hand Pulse Sensor with Tube End	2	155	Truss Carriage Bolt M10x95	2
54	Round Head Philips Screw M2.5x32	4	156	Cap Nut M10	4
55	Nut M2.5	4	157	Spring Washer M10x3.0t	8
56	Front Stabilizer	1	158	Washer Ø20xØ10.2x3t	8
57	Tube End Ø76.2X2.0T	2	159	Truss Carriage Bolt M8X50	4
58	Front Wheel	2	160	Spring Washer M8x2.0t Nickelage	8
59	Truss Hex Screw M8X40	2	161	Arc Washer Nickelage	4
60	Nylon Nut M8 BK	2	162	Nylon Nut M8	6
61	Plastic Pad	2	163	Cylindrical Head Truss Screw M10X85	4
62	Flat End Hex Screw M6X20	2	167	Round Head Philips Screw M6X12	6
63	Rear Stabililzer	1	168	Screwdriver	1
68	Tube End Ø60X2.0T	2	169	Lug Open Spanner (13、17)	1
69	Adjustment Foot Pad	4	170	Hex Wrench 6mm	1
70	Left Rocker	1	171	Hex Wrench 8mm	1
71	Right Rocker	1	172	SILICON	1
73	Tube End Ø38.1X2.0T	2	173	Lug Open Spanner (19)	1
74	Slipping Pole Assembly	2	180	Double Opening Wrench (10、13)	1
80	PU Wheel	2	181	Allen Nut	4
81	Bearing 6003ZZ	12	182	Rear Foot Decoration Cover	1
82	Sleeve NBO1760	2	183	Bookshelf Iron Plate	1
83	Sleeve NBO21575	4			